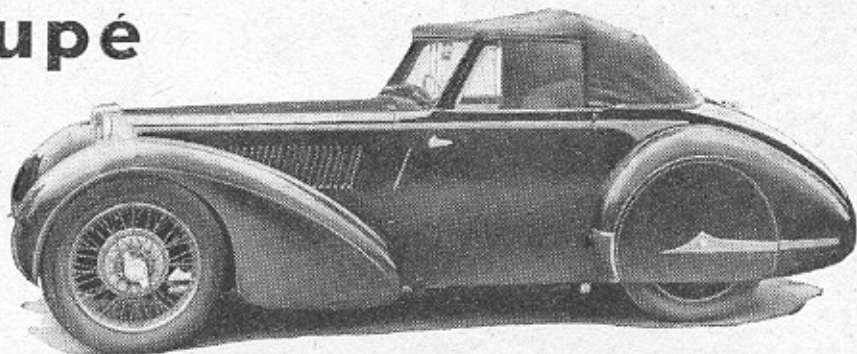


Sports Coupé De Luxe

Enthusiast's Drop-head Body
on a T-type M.G. Chassis



Handsome lines achieved by an amateur with coachbuilding facilities on a T-type M.G. chassis. The colour scheme is black with blue wheels and upholstery.

It is impossible not to be impressed by the penchant for an individual car expressed in the many alterations to standard bodies and chassis carried out by enthusiasts striving to attain their ideal car. Many of these efforts have been described in the 280-odd "Talking of Sports Cars" articles so far published in *The Autocar*. Most of the "specials" described were modified in sheds and garages by amateurs who made up for lack of professional skill, equipment and materials by unlimited enthusiasm. There can be few, however, among these enthusiasts who have not paused in their labours and sighed for the facilities to do the job in a really big way.

Recently I had the opportunity to inspect a car which was built by just such an enthusiast, but with the difference that he did possess the facilities in the shape of his own coachbuilding business. The result of his design, a drop-head coupé on a standard T-type M.G. chassis, is shown in the accompanying pictures.

Low-pressure Blower Fitted

Finished in black with sky-blue wheels and leather upholstery, the car contains much surplus aircraft material and weighs 18 cwt as against the 16 cwt of the standard T-type. The engine is the standard unit fitted with an Arnott low-pressure supercharger.

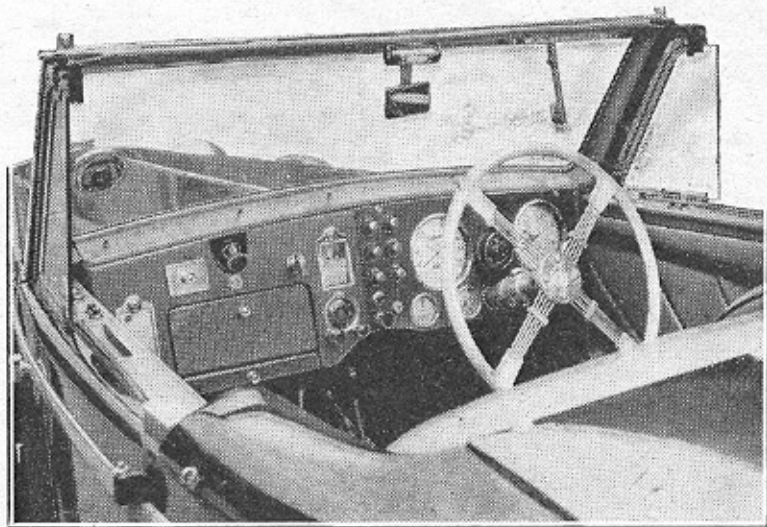
Light alloy sheeting has been used extensively in the body construction. The driving seat is placed three inches forward of the passenger seat, and this arrangement, coupled with the fact that the body is five inches wider than the standard T-type, gives the driver ample elbow room. The instrument board is the essence of simplicity and at the same time efficiency, for the instruments, lighting switches and minor controls are all grouped neatly on the driver's side, whilst on the near side a large cubby

hole or glove box takes up most of the available space; beneath this is a map tray which can be illuminated at night. A cigarette lighter and ashtray are provided for passengers and there is a radio. A mirror equipped with a spotlight which shines on the face of the passenger is also fitted. The whole instrument board is tastefully finished in blue leather, and hinges out upon the removal of three retaining screws to provide easy access to the rear of the instruments.

The hood can be quickly erected and when the windows, which are of safety glass and electrically operated, are fully raised weather protection is complete.

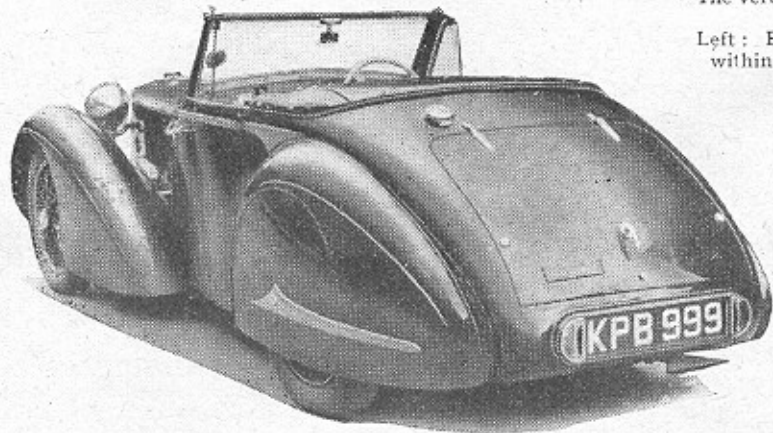
Windscreen misting is avoided by the extractor movement of the air inside the car, which is drawn out through a quarter-inch gap between the main windows and the overlapping deflector screens when the car is moving. Duplicated indicators are fitted to the sides and rear of the car, the rearmost pair being sunk flush into the swept tail, which accommodates a capacious luggage boot. When the lid of the boot is lifted the interior is lit at night and at the same time a safety rear light comes into operation.

The rear wheels, as will be seen, are enclosed and the spats on the wings are



Instruments are grouped neatly in front of the driver. The vertical line of buttons comprises light switches and minor controls.

Left: Extensive luggage capacity has been obtained within a neatly swept tail, above which is the filler cap.



quickly detachable by one turn on a square key, which also fits the luggage boot lid. Yale locks are fitted on doors, boot, glove box and petrol filler cap. The normal 12½-gallon petrol tank is retained, although it is mounted higher than in the standard car. The rear springs have been strengthened to take the extra weight. The floor is constructed of light alloy sheeting and is integral with the sides of the body which, the owner claims, it assists to keep rigid. The car had done 3,000 miles in its new guise when inspected and there was certainly no sign of play or whip in the doors or windscreen pillars. VIZOR.